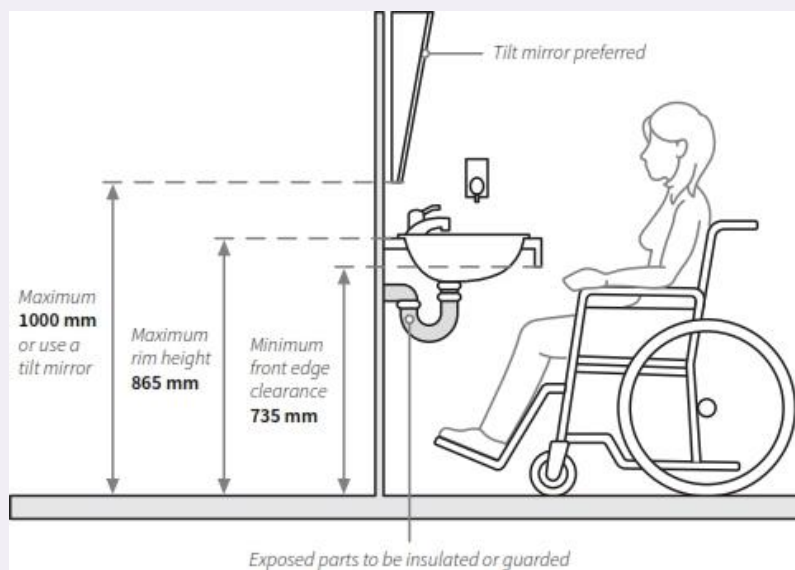


Best Practice Templates of Accessible Hotel Rooms and Bathrooms



August 2017



CREATING ACCESSIBLE HOTELS IN ALBERTA - Templates of Accessible Hotel Rooms and Bathrooms

Copyright © 2017, Voice of Albertans with Disabilities, incorporated 1973.

Sections of this paper may be reproduced with acknowledgement to Voice of Albertans with Disabilities.

While all reasonable care has been taken in the preparation of this publication, no liability is assumed for any errors or omissions.

This project was made possible by the Human Rights Education and Multiculturalism Fund.

Published and distribute by
Voice of Albertans with Disabilities
106-10423 178 Street NW
Edmonton, Alberta T5S 1R5
Phone: 780-488-9088
Email: vad@vadsociety.ca
Web: www.vadsociety.ca
Facebook: [VADisabilities](https://www.facebook.com/VADisabilities)
Twitter: [@VADisabilities](https://twitter.com/VADisabilities)



Human Rights
Education and
Multiculturalism
Fund

Voice of Albertans with Disabilities (VAD) are pleased to present best practice templates for accessible hotel rooms and bathrooms.

These templates meet the requirements of the Alberta Barrier-Free Design Guide and the Alberta Building Code. They also include features identified in the *Creating Accessible Hotels in Alberta* project by both persons with disabilities and hotel managers/owners as best practice ideas. Templates provide information on the following:

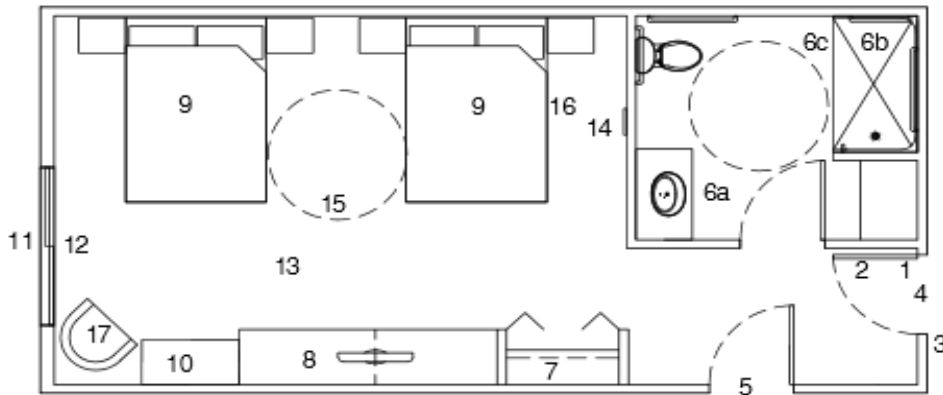
- Double Queen Bed Room Layout
- Single Queen Bed Room Layout
- Double Bed Room with Pullout Sofa Layout
- Specific measurements and design for Bed Elevation, Wardrobe Elevation and Height Switches
- Accessible Bathroom requirements

This document can be used by hotels to conduct a self-assessment on what they can do to improve the guest experience of persons with disabilities at their properties and assist builders during renovations and new builds in the hotel industry.



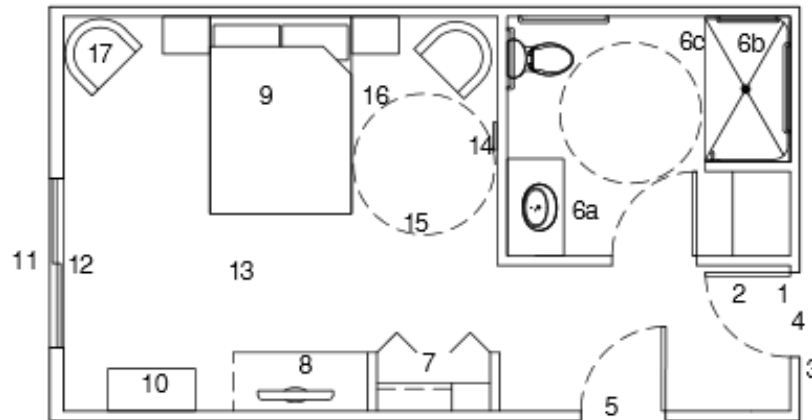
HOTEL ROOMS

Double Queen Bed Room Layout



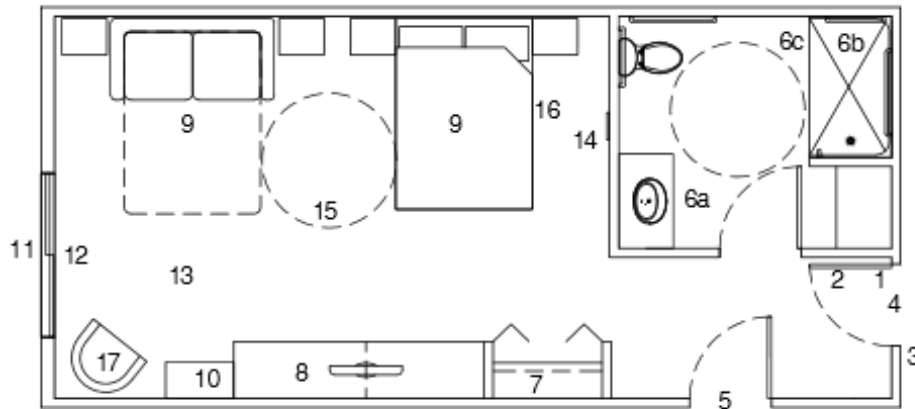
- | | |
|---|---|
| <ol style="list-style-type: none"> 1. Automatic door with hold opener delay 30 seconds 2. Peep holes at designated height 1000 mm - 1100 mm 3. Push plate to operate door opener 4. Door openings 850 mm min. 5. Door to connecting suite 6a. Slip resistant bathroom flooring 6b. Non-slip shower flooring 6c. Solid threshold - not to exceed 13 mm -use soft rubber 7. Wardrobe with shelving and pull down hanging rack 8. Dresser and TV | <ol style="list-style-type: none"> 9. Bed 10. Work table for computer 11. Level floor access to balcony 12. Curtains min. 6-8 inches above floor 13. Flooring with low pile carpet or resilient flooring tiles 14. Door bell and audio/ visual alarm 15. Turning radius 1500 mm min. 16. Open under bed for use of lift 17. Chairs have arms |
|---|---|

Single Queen Bed Room Layout



- | | |
|--|---|
| 1. Automatic door with hold opener delay 30 seconds | 9. Bed |
| 2. Peep holes at designated height 1000 mm - 1100 mm | 10. Work table for computer |
| 3. Push plate to operate door opener | 11. Level floor access to balcony |
| 4. Door openings 850 mm min. | 12. Curtains min. 6-8 inches above floor |
| 5. Door to connecting suite | 13. Flooring with low pile carpet or resilient flooring tiles |
| 6a. Slip resistant bathroom flooring | 14. Door bell and audio/ visual alarm |
| 6b. Non-slip shower flooring | 15. Turning radius 1500 mm min. |
| 6c. Solid threshold - not to exceed 13 mm -use soft rubber | 16. Open under bed for use of lift |
| 7. Wardrobe with shelving and pull down hanging rack | 17. Chairs have arms |
| 8. Dresser and TV | |

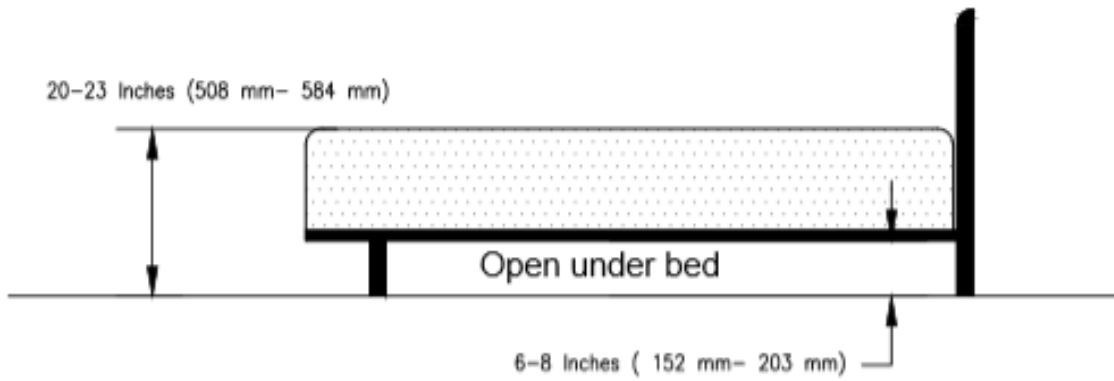
Double Bed Room with Pullout Sofa Layout



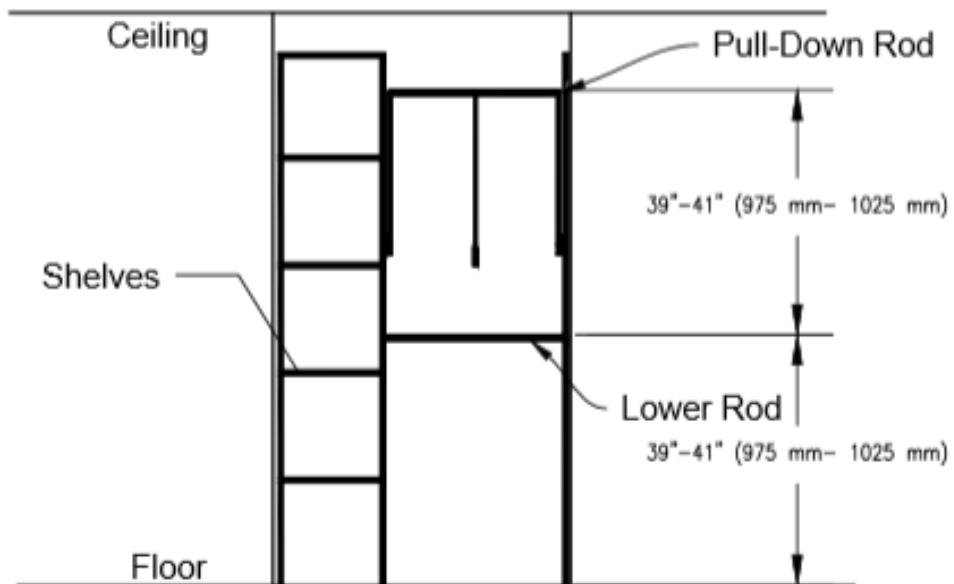
- | | |
|---|---|
| 1. Automatic door with hold opener delay 30 seconds | 9. Pull out couch / Bed |
| 2. Peep holes at designated height 1000 mm - 1100 mm | 10. Work table for computer |
| 3. Push plate to operate door opener | 11. Level floor access to balcony |
| 4. Door openings 850 mm min. | 12. Curtains min. 6-8 inches above floor |
| 5. Door to connecting suite | 13. Flooring with low pile carpet or resilient flooring tiles |
| 6a. Slip resistant bathroom flooring | 14. Door bell and audio/ visual alarm |
| 6b. Non-slip shower flooring | 15. Turning radius 1500 mm min. |
| 6c. Solid threshold - not to exceed 13 mm - use soft rubber | 16. Open under bed for use of lift |
| 7. Wardrobe with shelving and pull down hanging rack | 17. Chairs have arms |
| 8. Dresser and TV | |

**Bed Elevation,
Wardrobe Elevation
and
Height Switches**

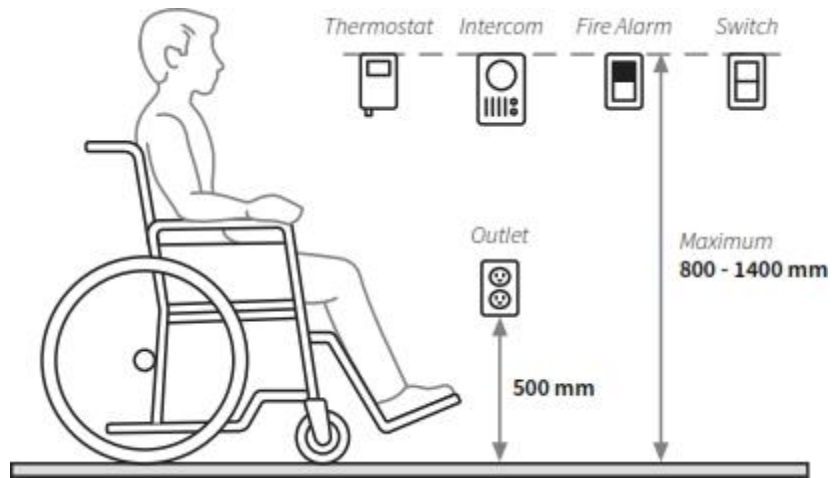
Bed Elevation



Wardrobe Elevation



Height of Switches



Accessible Bathrooms

